

## ST ANDREWS LINKS

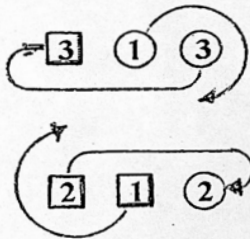
40 bar strathspey for a 3 couple set

- 1- 4      1st couple set advancing, turn with both hands once round, to finish facing up with nearer hands joined.
- 5- 8      1st couple cast off one place and petronella turn to finish:-  
1st woman between 2nd couple facing down; 1st man between 3rd couple facing up. (2nd couple step up on bars 5-6)
- 9-16      Set and link for three to finish:-  
1st woman between 2nd couple (now in 3rd place opposite sides) and 1st man between 3rd couple (now in top place opposite sides).
- 17-24      Six hands round and back, finishing as at end of bar 16.
- 25-28      Half reels of three across the dance, 1st couple giving right shoulders to person on their right to begin.
- 29-32      1st couple turn round with both hands to finish in 2nd place on own sides, and all three couples set.
- 33-36      1st couple, followed by 2nd couple, dance up between 3rd couple and cast off to finish 3, 2, 1.
- 37-40      2nd couple, followed by 3rd couple, dance down between 1st couple and cast up to finish 2, 3, 1.

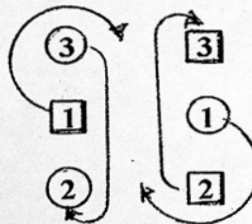
Repeat two more turns of dance.

### SET AND LINK FOR THREE - Devised by Milton Levy

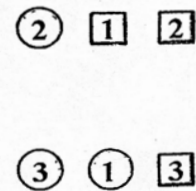
- 9-10      Set in lines of three.
- 11-12      2nd woman and 3rd man, on left of lines, dance to right end and curve round into place. 2nd woman finishes in top man's place facing across; 3rd man finishes in 3rd woman's place facing across.  
1st couple pull right shoulders back and cast clockwise to finish with 1st couple in 2nd place facing across.  
2nd man and 3rd woman, at right end of lines, pull right shoulders back and cast clockwise following 1st couple to left end of old line. 2nd man finishes in top place on the woman's side facing across; 3rd woman finishes in 3rd man's place facing across.
- 13-16      Repeat bars 9-12 to finish:-  
3rd couple in top place, opposite sides, facing down.  
2nd couple in 3rd place, opposite sides, facing up.  
1st man between 3rd couple; 1st woman between 2nd couple.



TOP  
bars 11-12



TOP  
bars 15-16



TOP  
end of bar 16